

ROAD INDEX

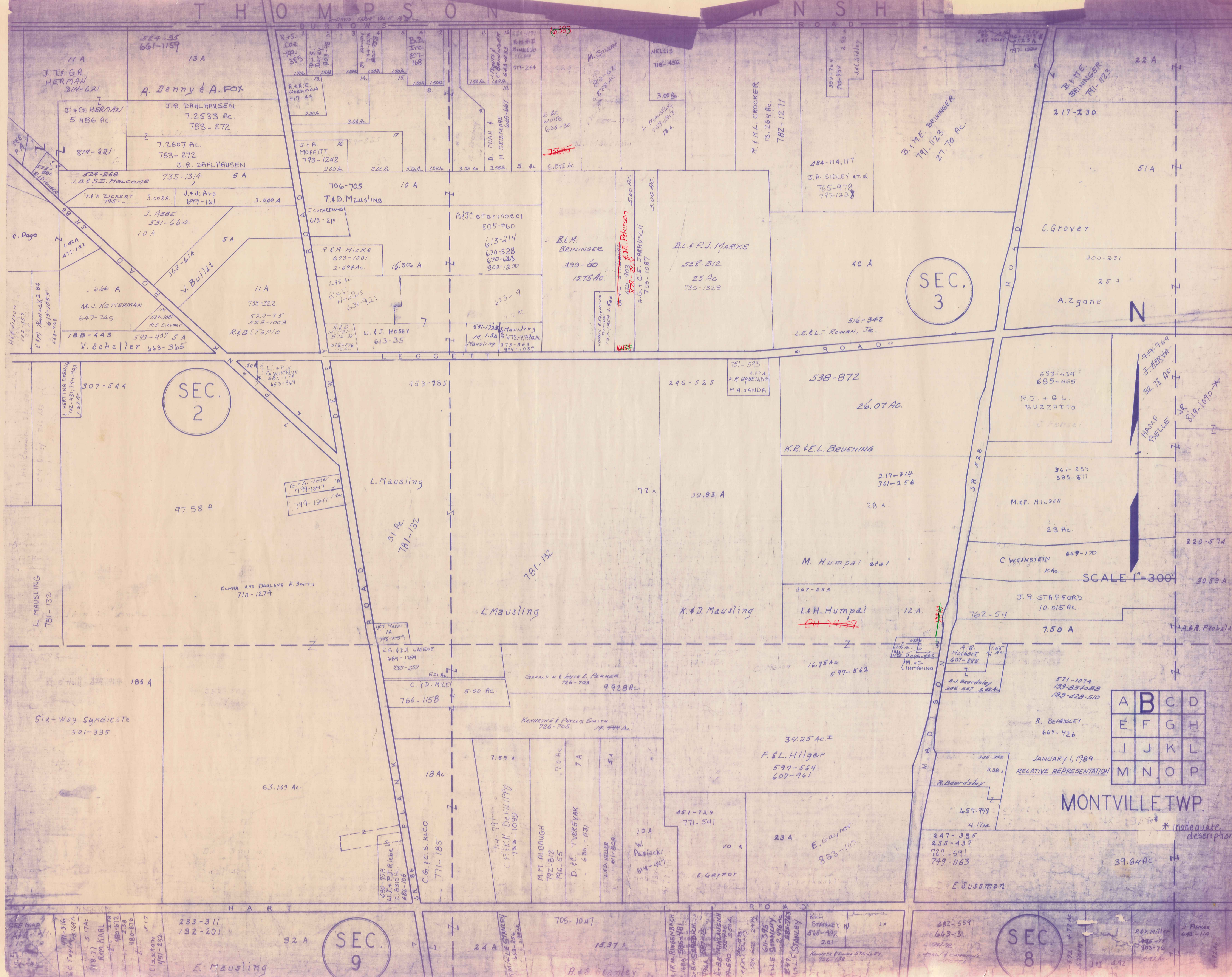
A	I	R	
J	JOANN DRIVE	C-3	
B	BURROWS RD. BI-FI	KILE ROAD A2-A6	
S	SUN ROAD	D5	
C	CLAY STREET BI-C6	LEGGETT RD. BI-F2	T
D	DEWEY ROAD	CI	MADISON RD. DI-D6
			MORGAN RD. FI-F3
			MURPHY RD. FI
E			V
F			W
			WHITNEY RD. D5-F5
			WOODHILL DR. BI
G	G.A.R. HIGHWAY A4-F4		X
			Y
H	HART ROAD A2-E2		Z
	HAUTALA ROAD C6		

- ① LEDGEMONT SCHOOL
- ② COMMUNITY CHURCH
- ③ MONTVILLE METHODIST CHURCH
- ④ MONTVILLE CEMETERY
- ⑤ MONTVILLE VOL. FIRE DEPT.
- ⑥ UNITED STATES POST OFFICE
- ⑦ MONTVILLE TOWN HALL
- ⑧ STATE-HIGHWAY GARAGE (SUB STATION)
- ⑨ MONTVILLE COMMUNITY CENTER

MONTVILLE TOWNSHIP

SCALE: 1" = 2000'
 ROBERT L. PHILLIPS,
 GEauga COUNTY ENGINEER

--- UNPAVED ROADS
 --- PAVED ROADS
 --- TOWNSHIP LINE
 --- COUNTY LINE



SEC. 2

SEC. 3

SEC. 8

SEC. 9

A	B	C	D
E	F	G	H
J	K	L	
M	N	O	P

MONTVILLE TWP.

JANUARY 1, 1989
RELATIVE REPRESENTATION

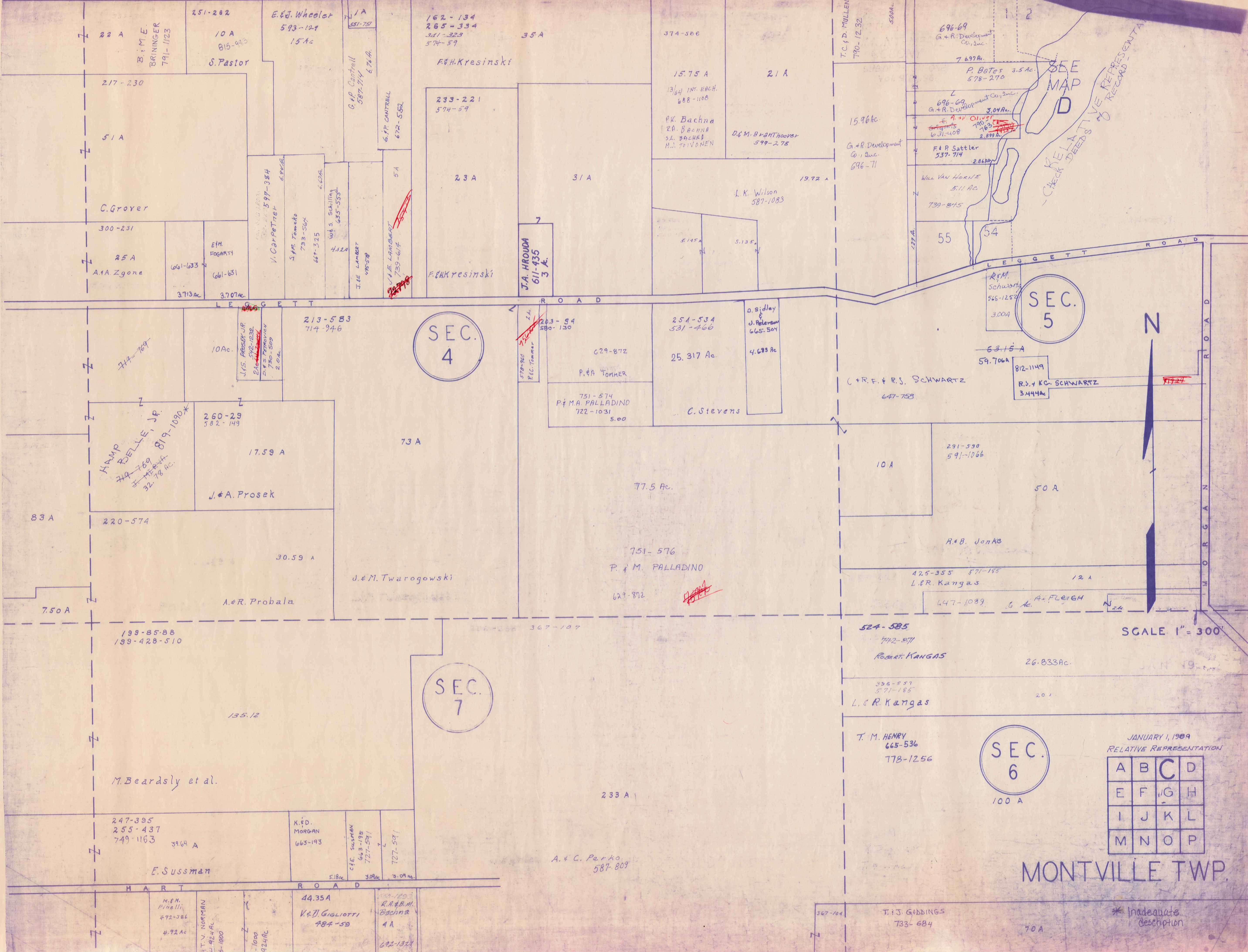
* Inadequate description

SCALE 1"=300'

SEE MAP APP. 10
491-316
491-317
491-318
491-319
491-320
491-321
491-322
491-323
491-324
491-325
491-326
491-327
491-328
491-329
491-330
491-331
491-332
491-333
491-334
491-335
491-336
491-337
491-338
491-339
491-340
491-341
491-342
491-343
491-344
491-345
491-346
491-347
491-348
491-349
491-350
491-351
491-352
491-353
491-354
491-355
491-356
491-357
491-358
491-359
491-360
491-361
491-362
491-363
491-364
491-365
491-366
491-367
491-368
491-369
491-370
491-371
491-372
491-373
491-374
491-375
491-376
491-377
491-378
491-379
491-380
491-381
491-382
491-383
491-384
491-385
491-386
491-387
491-388
491-389
491-390
491-391
491-392
491-393
491-394
491-395
491-396
491-397
491-398
491-399
491-400
491-401
491-402
491-403
491-404
491-405
491-406
491-407
491-408
491-409
491-410
491-411
491-412
491-413
491-414
491-415
491-416
491-417
491-418
491-419
491-420
491-421
491-422
491-423
491-424
491-425
491-426
491-427
491-428
491-429
491-430
491-431
491-432
491-433
491-434
491-435
491-436
491-437
491-438
491-439
491-440
491-441
491-442
491-443
491-444
491-445
491-446
491-447
491-448
491-449
491-450
491-451
491-452
491-453
491-454
491-455
491-456
491-457
491-458
491-459
491-460
491-461
491-462
491-463
491-464
491-465
491-466
491-467
491-468
491-469
491-470
491-471
491-472
491-473
491-474
491-475
491-476
491-477
491-478
491-479
491-480
491-481
491-482
491-483
491-484
491-485
491-486
491-487
491-488
491-489
491-490
491-491
491-492
491-493
491-494
491-495
491-496
491-497
491-498
491-499
491-500

T H O M P S O N T O W N S

B U R R O W S R O A D

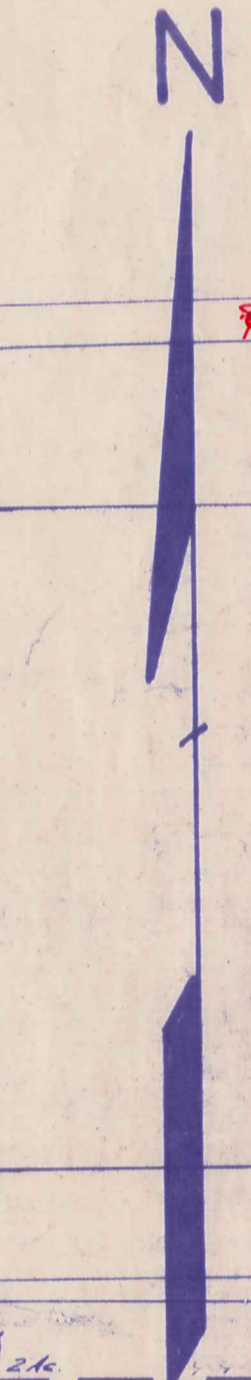


SEC. 4

SEC. 5

SEC. 7

SEC. 6



SCALE 1" = 300'

JANUARY 1, 1969

RELATIVE REPRESENTATION

A	B	C	D
E	F	G	H
I	J	K	L
M	N	O	P

MONTVILLE TWP.

* Inadequate description

22 A
B. M. E. BRINGER
791-1123

251-262
10 A
815-943
S. Pastor

E. & J. Wheeler
593-124
15 Ac

162-134
265-334
321-323
574-59

35 A
F. & H. Kresinski

374-566

15.75 A
13/64 INT. EACH.
688-1108

21 A
P.R. Bachna
R.O. BACHNA
M.J. TOIVONEN

D. & M. Brant Hoover
599-278

15.96 Ac
G. & R. Development Co., Inc.
696-71

7.697 Ac
P. Botes
578-270

696-69
G. & R. Development Co., Inc.
3.04 Ac

F. & P. Sattler
537-714

WILL VAN HORNE
511 AC
739-845

217-230
51 A
C. Grover

300-231
25 A
A. & A. Zgone

E.H. Fogarty
661-633
661-631

V. Carpentier
597-384

S.M. Tomcko
733-364
66-325

W. & S. Schilling
635-555

H. & L. Lambert
695-578

233-221
574-59

23 A
31 A

L. K. Wilson
587-1083

5.145 A
5.135 A

J.A. Hrouda
611-435
3 A.

7
3 A.

55
54

370 Ac
3.707 Ac

10 Ac

J. & S. Parsley, Jr.
572-1236

213-583
714-946

203-54
580-130

629-872
P. & A. Tommer

254-534
531-460

25.317 Ac
C. Stevens

O. Sidley
J. Peterson
665-504

4.683 Ac

63.15 A
59.706 A

812-1149
R.S. & K.C. Schwartz
3.444 Ac

7724

647-758
(+R.E. & R.S. Schwartz)

714-769

260-29
582-149

17.59 A
J. & A. Prosek

73 A

751-574
P. & M. Palladino
722-1031

5.00

77.5 Ac.

751-576
P. & M. Palladino

629-872

10 A
291-590
591-1066

50 A

R. & B. Jonas

425-355
571-185
L. & R. Kangas

12 A

83 A
220-574

30.59 A
A. & R. Probala

J. & M. Twarogowski

367-107

524-585
742-871

26.833 Ac.
Robert Kangas

396-857
571-185

20 A
L. & R. Kangas

70 A

70 A

70 A

70 A

70 A

70 A

750 A

199-85-88
199-428-510

M. Beardsly et al.

247-395
255-437
749-1163

39.64 A
E. Sussman

K. & D. Morgan
665-193

C. E. Sherman
643-195
727-571

727-571

44.35 A
V. & J. Gigliotti
487-59

R. & B. M. Bachna
4 A

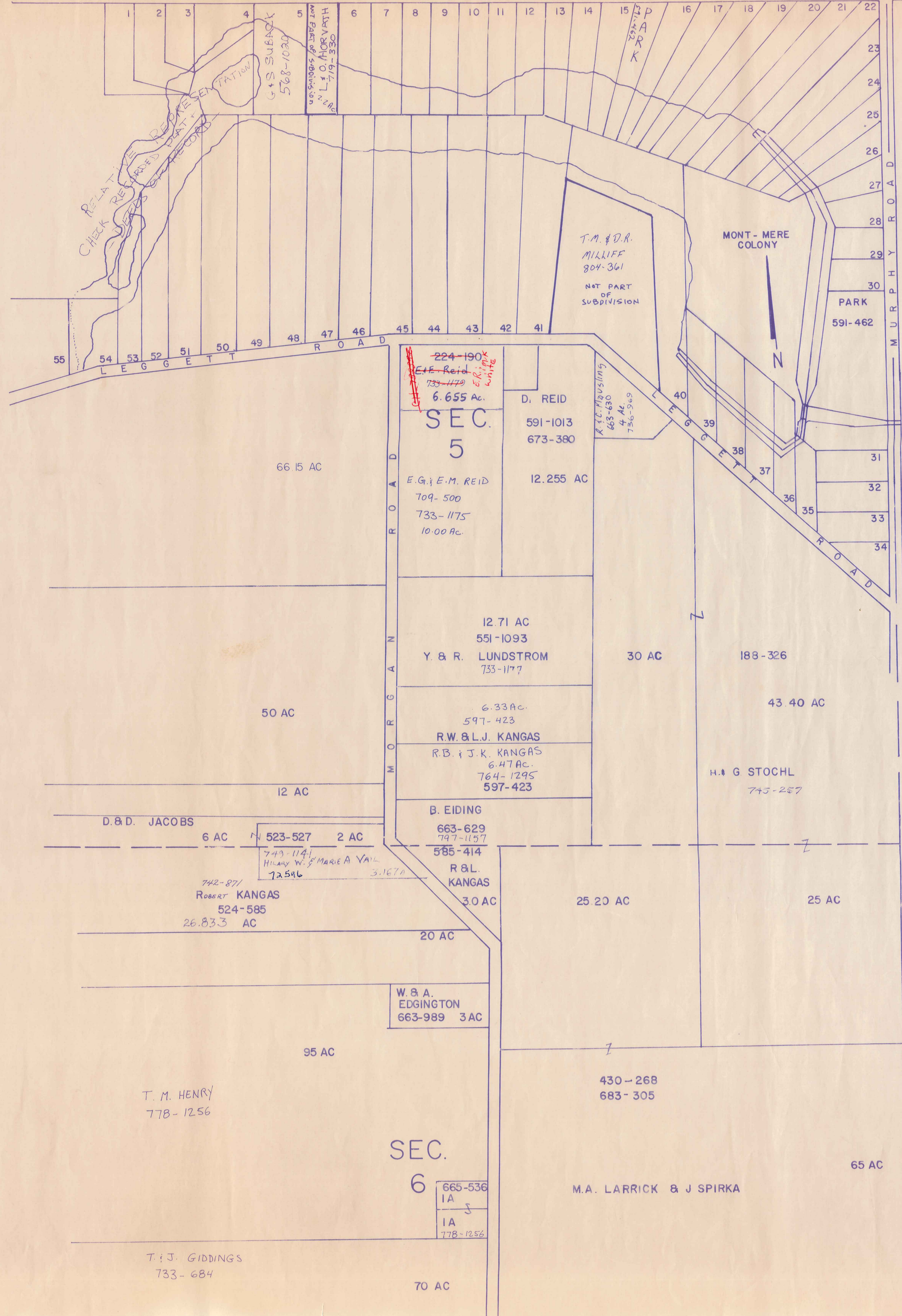
692-1321

T. J. Giddings
733-684

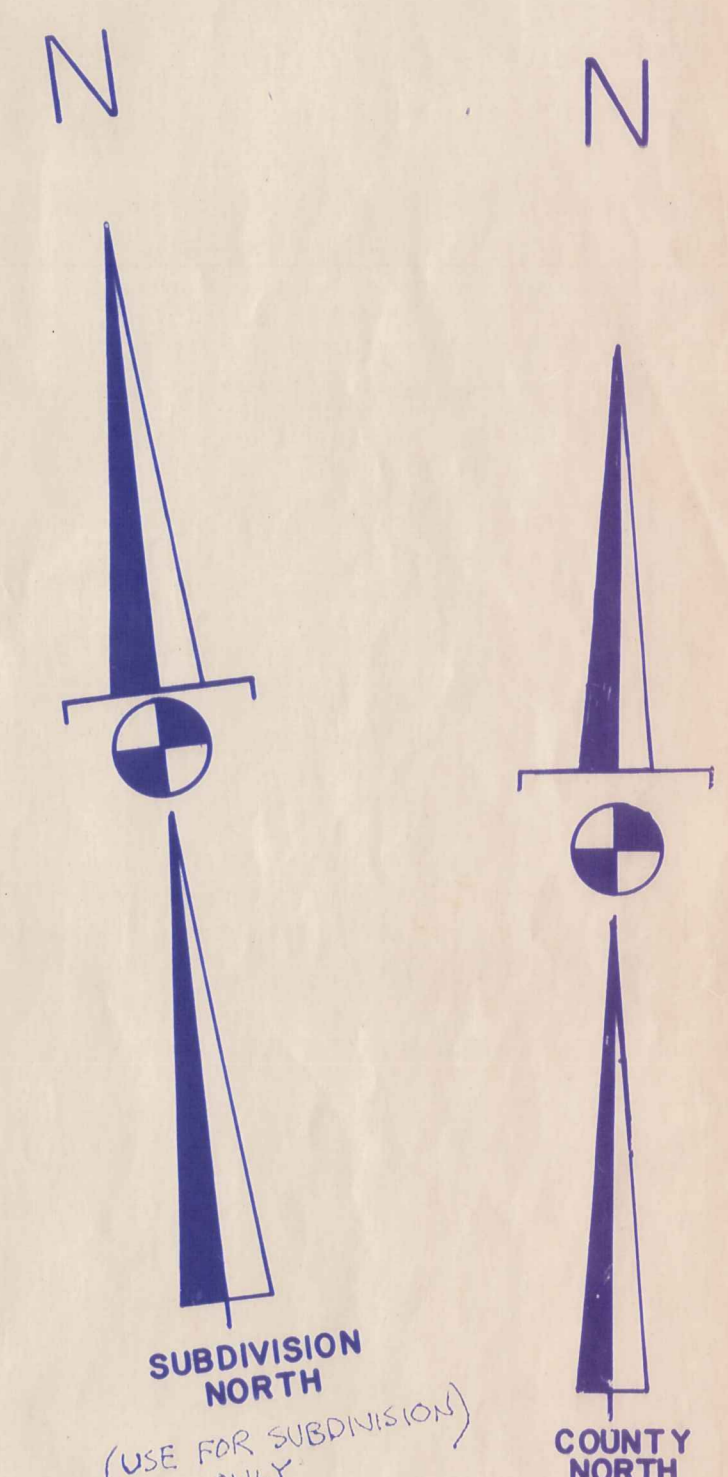
70 A

70 A

T H L O M P R S O N T O W N S H I P



MONT-MERE COLONY		
SUBDIVISION ONE - Vol. 9-Pg 96		
1		
2	J. L. MURRAY	669-363
3	M. R. ANDERSON	559-007
4	M. B. NUTTING	635-842
5	G. P. + S. L. SUBACK	568-1020
6	R. J. NANK	700-875
7	D. P. HONSAKE	762-156
8	J. J. A. POGHEN	763-633
9	D. C. O'DELL	747-1235
10	J. B. CHAMBERLAIN	575-654
11	S. C. LIPKA	617-340
12	C. C. LIPKA	525-1041
13	THOMAS J. REYCH	748-500
14	J. S. VYNIENIS	633-580
15	T. D. SCOUTER	552-817
16	J. J. McDOUGALL	789-1288
17	A. Goldkowskis	683-525
18	A. B. UMBEL	581-1059
19	J. M. FURBERSON	821-1182
20	G. L. S. GRODDE	580-817
21	T. J. Bohinc, Sr. (Trustee)	703-1387
22	R. S. Ammond	677-1237
23	WALTER KICKMAN	729-424
24	R. D. CONKLIN	585-372
25		
26	T. D. BRUNINGER	552-32
27	G. MORZEGOWSKI	633-1037
28	J. K. AMMOND	686-1058
29	A. E. STRONG	728-1039
30	J. P. STEFANEC	578-277
31	D. KINGSLAND	676-611
32	A. J. M. ANDRYS	643-914
33	C. Bromafsky	812-1182
34	R. AVSTER Eye Co.	850-780
35	R. J. PALOJAS	647-367
36	E. J. PALOJAS	647-367
37	R. E. & P. BRANT	625-123
38	J. F. KIGAVSKAS	633-877
39	A. G. KIGAVSKAS	683-415
40	Steve Roper	733-1035
41	J. FERRATO & E. SIMCIC	767-210
42	D. E. FERRATO	538-1009
43	R. M. KNOP	734-1542
44	H. M. BARNES	593-1208
45	D. TROETER	607-377
46	" " "	" " "
47	F. L. WILT	706-114
48	Y. P. Sritalapat	810-293
49	P. B. Drees	571-027
50	T. L. FREILEY	717-236
51	W. E. BraviaK	811-301
52	R. Neibauer	812-1146
53	J. P. PETERSON	757-297
54	J. D. CALVARTIS	568-828
55	L. R. WILKES	621-1047



SCALE : 1" = 300'
 JAN. 1, 1989
 RELATIVE REPRESENTATION

* Inadequate description

A	B	C	D
E	F	G	H
I	J	K	L
M	N	O	P

H A M B D E N T O W N S H I P

291-74
300-151
25.08 A
W. Pastula
532-485
C.L. White 419-928
5.008 Ac.
S.E. & K.R. FULLER
5.008 Ac.
768-936
K.F. Minkie
542-884
5.008 734-384
JOHN & MARY LEWIS
732-1085
5.008 Ac.

M.A.K. Roth
556-1244
987-953 37.58 Ac.
34.58 Ac.

H. & J. Rath
587-951
35.58 Ac.

451-940

SEC. 10

214 A

SEC. 9

270-478
463-935
L. HOFSTETTLER
9.3 Ac

353-934
J. STANLEY
531-1060
5.26 Ac

N

130-924
W.S. Stone

35.25 A

R. & B. Townsend

37.75 A

W.C. Frank
486-919

S. Ries
30.12 Ac.
312-444

452-1016

939-96

450.

25 A

25.16 A

C. Homeier

R. & B. TOWNSEND
777-1017

100 A

SCALE 1"=300'

532-448
W.M.
MELARAGNO
2.5 A

21.71 A

J. J. NINGARD JR.
611-1276

285-577
578-323

K. Townsend
663-90
11.02 A

SEC NAVY 546-377
715-1834 KEVIN R. & KATHLEEN J. LYONS
4.40 A
409-9 M. Tripodo
4.40 A
285-115 S. Tripodo
4.39 A

790-338 8.78 A
W.E., Jr. & R.A. HART

396-338 8.79 A
F. Metzger (aka Miller)

278-186 8.75 A
715-288
A.M. Iannica

8.744 A
571-482
709-1238
Vaso. Kozlovich, Jr.

J. & M. KORTIS 8.73 A
593-1045

699-285 8.72 A
734-141
M.C. Knowlton

6.94 A
332-259

J. Nelson
409-584
1001
187-793
611-482
C. Brock
218 Ac.
61-482
818-800
760-1171
C. BUCK
605-616
715-553
Remond & Son
C. BUCK
537-1181
E.C. SACMS
755-591
K.F. NELSON
715-591
447-1000
578-21
K.T. KNAPIK
803-632

548-771

515-736
JOHN
HILLINGER
38184 A.

43.77 A

SEC. 11

64-73283
73367

46 A

T. & D. Pierce 705-24

64.68 Ac

G.F. Davis
589-923

G.F. Davis
589-923

SEC. 12

218-117

28.07 A

E. Hegeaus

C.J. MISOSKY
788-990

105 A

JAN. 1, 1989
RELATIVE REPRESENTATION

MONTVILLE TWP.

JAN. 1, 1987

* Inadequate description

599-1000
D. & D. A.
WHITTINGTON

254-115 3.92 A
R.A.L. Craxton

316-348
665-1111
D.V. Papp
316-325
M. Majewski

513-1004
1.48 A
M. E. N.
Boenhouse

220-614

72.70 A

A. & J. Miller

R.L. BEDNAR
3 Ac
794-657

25 A

25 A

J. & N. WINTERS
611-550

E. LEWANSKI

706-1124

M.T. SLEZAK
T. MIRA
3.00 Ac.
794-556

49 Ac.

751-265

L. LEE

746-46

224-248

52 A

R. Turner

WIP
HOLBERT
611-563
715-06
265-62
749-597-415
749-597-415
749-597-415

424-902
582-692

27 A

23 Ac

792-1

54-1025
E.M. Wiersyt
20 Ac.

G.E. OLIV
751-005
751-005
751-005

14.20 A

12.51 Ac.

G. Eyring
591-1200
12.744

H.M. Boesger Jr.
601-712

6.26 A



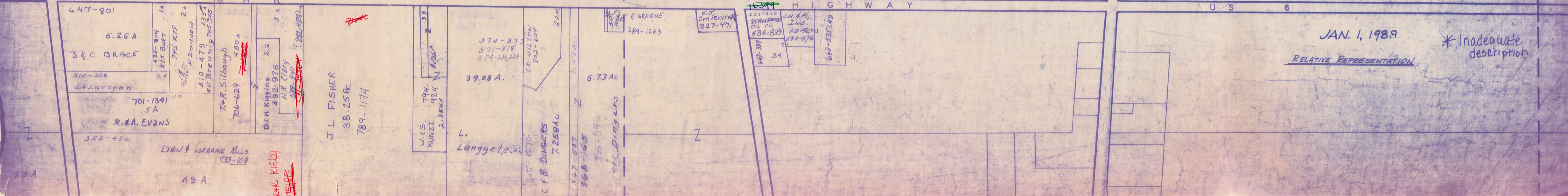
A	B	C	D
E	F	G	H
I	J	K	L
M	N	O	P

MONTVILLE TWP.

JAN. 1, 1989

RELATIVE REPRESENTATION

* Inadequate description



SEE DETAIL SHEET 10 Q

SEE MAP A
W.C. TAYLOR 491-316
R.M. KARL 478-77
480-672
K. Craxton 451-292

88 P.
15 AC. Clemons
598-117

SEE MAP B
2.5 AC.

SEE MAP B

682-558
11.65 Ac
663-3
K.S. GRAHAM
E.A. CHAPEL

R. Halberstadt
811-131
9943

931-912
581-809

C. Perko

R.E.M. DiFranco
508-3

R.E.M. DiFranco
508-3

J.L. PETERSEN
15 A
619-123
647-80

246-37
500-1168
L. Schutum
A.F. & E.E. Schutrum

A.D. HOLBERT
720-107

661-57
D. DiFiore
A. DiFRANCO
B. PENNY
P. EISENBERG

320-394
W. Jones
SHIRLEY McCLAIN
739-748

571-170
803-591
804-900

J. & V. Williams
MONTVILLE Vol. FIRE DEPT.
538-430

233-384
239-87

35.25 A

L. Rhodes

37.75 A

W.C. FRANK
486-919

21 A

39.30 A

S. & M. Poropat

S. & M. POROPAT
13.521 Ac.

H.K. PROOKER
629-1249
A. BACON 3AC

22.4 Ac.

S. & M. POROPAT
23.473 Ac.

SEC. 12

647-957
781-436
K.L. ALICH
779-96

389-602

B.M. Loveland

37.35 A

K. Ricks

607-254
D.C.B. Loveland
607-941
D. Vokonas
B. Loveland
607-940

11.16 Ac
752-778
S. BURKETT
B. NOSSE

M. Finkbe

752-778
S. BURKETT
B. NOSSE

574-53

538-1221

SEC. 13

109.175 A

29.47 A

SEE DETAIL SHEET 10 Q

392-357

5A

40 A

5A

5A

5A

5A

5A

5A

5A

5A

5A

5A

5A

5A

5A

5A

5A

5A

647-901
6.26 A
J.C. BRACE

316-398
V.F. GROGAN

701-1341
5A
R.H.A. EVANS

352-456
EDWIN & LORRANE MILLS
733-108

49 A

J.L. FISHER
38.25 Ac.
789-1174

W.S. KUNZI
794
924
2.38 AC

L. Langgelo

374-37
571-818
574-254

39.08 A.

L. Langgelo

A. GREENE
689-1263

5.73 Ac

L.C. B. DINGERS
7.258 AC.

3.62-977
368-168
356-548

607-254
D.C.B. Loveland
607-941
D. Vokonas
B. Loveland
607-940

11.16 Ac
752-778
S. BURKETT
B. NOSSE

5.73 Ac

L.C. B. DINGERS
7.258 AC.

3.62-977
368-168
356-548

607-254
D.C.B. Loveland
607-941
D. Vokonas
B. Loveland
607-940

11.16 Ac
752-778
S. BURKETT
B. NOSSE

5.73 Ac

L.C. B. DINGERS
7.258 AC.

3.62-977
368-168
356-548

607-254
D.C.B. Loveland
607-941
D. Vokonas
B. Loveland
607-940

11.16 Ac
752-778
S. BURKETT
B. NOSSE

5.73 Ac

L.C. B. DINGERS
7.258 AC.

3.62-977
368-168
356-548

607-254
D.C.B. Loveland
607-941
D. Vokonas
B. Loveland
607-940

11.16 Ac
752-778
S. BURKETT
B. NOSSE

5.73 Ac

L.C. B. DINGERS
7.258 AC.

3.62-977
368-168
356-548

607-254
D.C.B. Loveland
607-941
D. Vokonas
B. Loveland
607-940

11.16 Ac
752-778
S. BURKETT
B. NOSSE

5.73 Ac

L.C. B. DINGERS
7.258 AC.

3.62-977
368-168
356-548

607-254
D.C.B. Loveland
607-941
D. Vokonas
B. Loveland
607-940

11.16 Ac
752-778
S. BURKETT
B. NOSSE

5.73 Ac

L.C. B. DINGERS
7.258 AC.

3.62-977
368-168
356-548

607-254
D.C.B. Loveland
607-941
D. Vokonas
B. Loveland
607-940

11.16 Ac
752-778
S. BURKETT
B. NOSSE

5.73 Ac

L.C. B. DINGERS
7.258 AC.

3.62-977
368-168
356-548

607-254
D.C.B. Loveland
607-941
D. Vokonas
B. Loveland
607-940

11.16 Ac
752-778
S. BURKETT
B. NOSSE

5.73 Ac

L.C. B. DINGERS
7.258 AC.

3.62-977
368-168
356-548

607-254
D.C.B. Loveland
607-941
D. Vokonas
B. Loveland
607-940

11.16 Ac
752-778
S. BURKETT
B. NOSSE

5.73 Ac

L.C. B. DINGERS
7.258 AC.

3.62-977
368-168
356-548

607-254
D.C.B. Loveland
607-941
D. Vokonas
B. Loveland
607-940

11.16 Ac
752-778
S. BURKETT
B. NOSSE

5.73 Ac

L.C. B. DINGERS
7.258 AC.

3.62-977
368-168
356-548

607-254
D.C.B. Loveland
607-941
D. Vokonas
B. Loveland
607-940

11.16 Ac
752-778
S. BURKETT
B. NOSSE

5.73 Ac

L.C. B. DINGERS
7.258 AC.

3.62-977
368-168
356-548

607-254
D.C.B. Loveland
607-941
D. Vokonas
B. Loveland
607-940

11.16 Ac
752-778
S. BURKETT
B. NOSSE

5.73 Ac

L.C. B. DINGERS
7.258 AC.

3.62-977
368-168
356-548

607-254
D.C.B. Loveland
607-941
D. Vokonas
B. Loveland
607-940

11.16 Ac
752-778
S. BURKETT
B. NOSSE

5.73 Ac

L.C. B. DINGERS
7.258 AC.

3.62-977
368-168
356-548

607-254
D.C.B. Loveland
607-941
D. Vokonas
B. Loveland
607-940

11.16 Ac
752-778
S. BURKETT
B. NOSSE

5.73 Ac

L.C. B. DINGERS
7.258 AC.

3.62-977
368-168
356-548

607-254
D.C.B. Loveland
607-941
D. Vokonas
B. Loveland
607-940

11.16 Ac
752-778
S. BURKETT
B. NOSSE

5.73 Ac

L.C. B. DINGERS
7.258 AC.

3.62-977
368-168
356-548

607-254
D.C.B. Loveland
607-941
D. Vokonas
B. Loveland
607-940

11.16 Ac
752-778
S. BURKETT
B. NOSSE

5.73 Ac

L.C. B. DINGERS
7.258 AC.

3.62-977
368-168
356-548

607-254
D.C.B. Loveland
607-941
D. Vokonas
B. Loveland
607-940

11.16 Ac
752-778
S. BURKETT
B. NOSSE

5.73 Ac

L.C. B. DINGERS
7.258 AC.

3.62-977
368-168
356-548



SCALE 1" = 300'
JAN. 1, 1988
RELATIVE REPRESENTATION

SEC. 7

SEC. 6

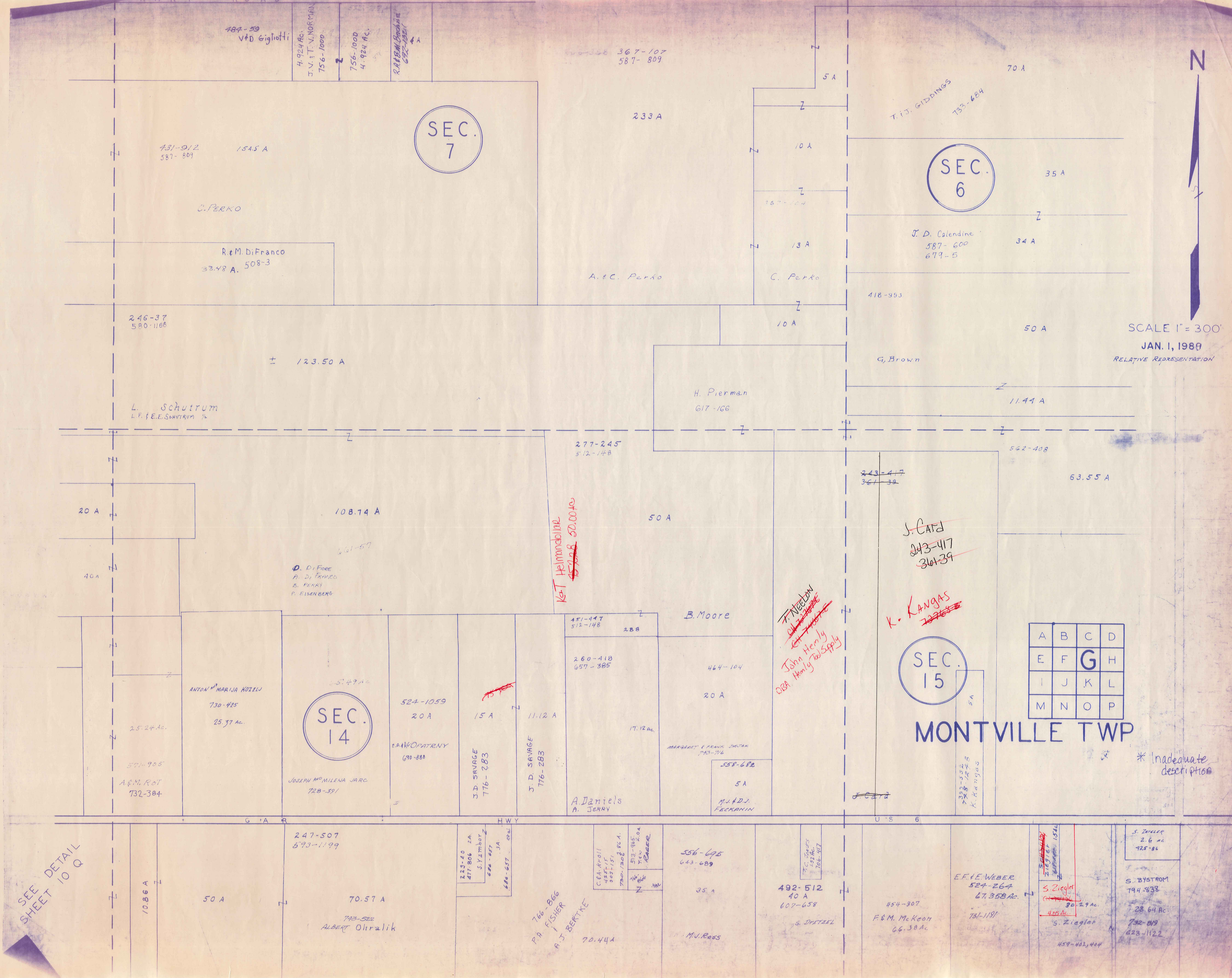
SEC. 15

A	B	C	D
E	F	G	H
I	J	K	L
M	N	O	P

MONTVILLE TWP

* Inadequate description

SEE DETAIL SHEET 10 Q



484-59
V+D Gigliotti

4.924 Ac.
J.V. & T.V. NORMAN
756-1000

756-1000
4.924 Ac.

R.A. & M. Biondini
672-4381

367-107
587-809

233A

T.J. GIDDINGS
733-684

70 A

431-912
587-809

C. Perko

R & M DiFranco
32.48 A. 508-3

A. & C. Perko

C. Perko

J. D. Calendine
587-600
679-5

418-393

G. Brown

246-37
580-1166

L. Schutrum
L.F. & E.E. Schutrum 1/2

H. Pierman
617-166

277-245
512-148

243-417
361-39

20 A

108.74 A

50 A

63.55 A

D. Di Fiore
A. Di Franco
B. Perry
P. Eisenberg

K&T Heilmobiler
50.000 +/-

B. Moore

T. Nieldon
John Henry's
Home Tail Supply

K. Kangas

451-447
512-148

260-418
657-385

ANTON MARIJA KOZELJ
730-425

SEC. 14

524-1059
20 A

15 A

11.12 A

17.12 ac.

464-104
20 A

MARGARET & FRANK JOSTAR
793-714

A. Daniel's
A. JERRY

558-682
M.J.D.J.
FECKANIN

25.24 Ac.

571-905
A&M. ROT
732-384

JOSEPH MILENA JARC
728-391

EARL OPATRYNY
690-880

J.D. SAVAGE
776-283

J.D. SAVAGE
776-283

247-507
593-1199

223-40
477-806 ZA
S.Y. Amboy
688-857

684-4011
435-117
305-151
750-1306
513-985
750-204
C. R. R. R.

556-695
643-689

492-512
40 A
607-658

E.F.E. WEBER
524-264
67.358 Ac.

454-307
F. & M. McKeon
66.38 Ac.

S. Ziegler
2.6 ac
794-838
23.64 Ac.
732-819
623-1122

S. Ziegler
2.6 ac
794-838

S. Bystrom
794-838
23.64 Ac.
732-819
623-1122

50 A

70.57 A

743-522
ALBERT OHRALIK

766-866
P.A. FISHER
A.J. BERTIKE
70.44 A

M.J. Ross

459-402,404

SEC. 6

220-374

M. A. LARPICK
J. Spirka

55A

L.B.F.W.
FLANAGAN
767-824 303A

M. & H. BURROW & C. W. WELLS
748-920 22.235A

J. & Z. BERNHARD
740-81

431-607

JOHN & ALMA BARILLE
747-832 22.235

J. B. HERTIMA
621-927 303A

48.44 A

G. & M. Trask
735-19B
463-269
574-857
601-372
L.F. Trask
47-1252

270-465
582-84 5A
G. P. Heller

J.D. Calandine
631-1248
679-5

R.F. & J.A.
O. HARTNER
803-280 6A

TERRY & JEAN GIDDINGS
733-684

Kim-Sean Corp.
Eugene Gordon
Peterson
A. D. KOLL MORGENTHAU
758-898 2.0A
G. HARRINGTON
609-827
M. L. MANLEY
698-805 2.0A
D. L. OLIVER
711-49 2A
KIM-SEAN CORP.

44.308 Aet
0.123 R/W
44.431 A

L. M. Caruso
R. B. Morgan

H. Pierman
617-921 2.58Ac

ANNA Marie & Joseph Majka
1/4/83 25.1926Ac 693-99

Josephine Anne & Harold Edward Hertma
1/4/83 734-618

617-166
55.81 Ac.
H. A. PIERMAN
617-919 2.58 Ac.
C. Pierman
617-923 2.58 Ac.
H. Pierman

H.D. & M.W. STOLTZ 694-160
694-158 6.26Ac.

5A
469-778
J. A. Majka

234-318

724-1219
W. J. Dombrowski

431-553

3.25 A

206-442

39.75 A

20 A

43 A

15 A

15 A

Joe Sinkovec
574-624

574-622

22.34 Ac.

665-70K
469-728
JIL MASCORELLA
JIL MASCORELLA
469-440
1-083A
B. D. Tahman
480-597
2A 136-156
117 A .50

F.A.M.A.
Sinkovec

728-234
0164 SWARDZ
220-288 et al.

D.L. STEFANSKY
I. Bosse 692-758

M. Linkford
G.E. Dombrowski
883-1710

D. Geisman



SCALE 1" = 300'

* Inadequate description

JANUARY, 1989
RELATIVE REPRESENTATION

A	B	C	D
E	F	G	H
I	J	K	L
M	N	O	P

MONTVILLE TWP

SEC. 15

312-457-B
637-959

367-417
382-545

O. LOZOP & R. KUCZAK
444-593, 595
512-597

61.76 A

12 A

50 A

24.71 A

P. Berardinelli

S. Zadnik

W. MAUSUNG

J. Trask et al.

C. Neusa

31.27 A

33 A

127-70

M. B. Cujanovic
583-170

546-367

23.8 ac

393-1012

1.35 A

99 A

17.3 ac

9.7 Ac.

U. Piacit
706-598

728-234
0164 SWARDZ
220-288 et al.

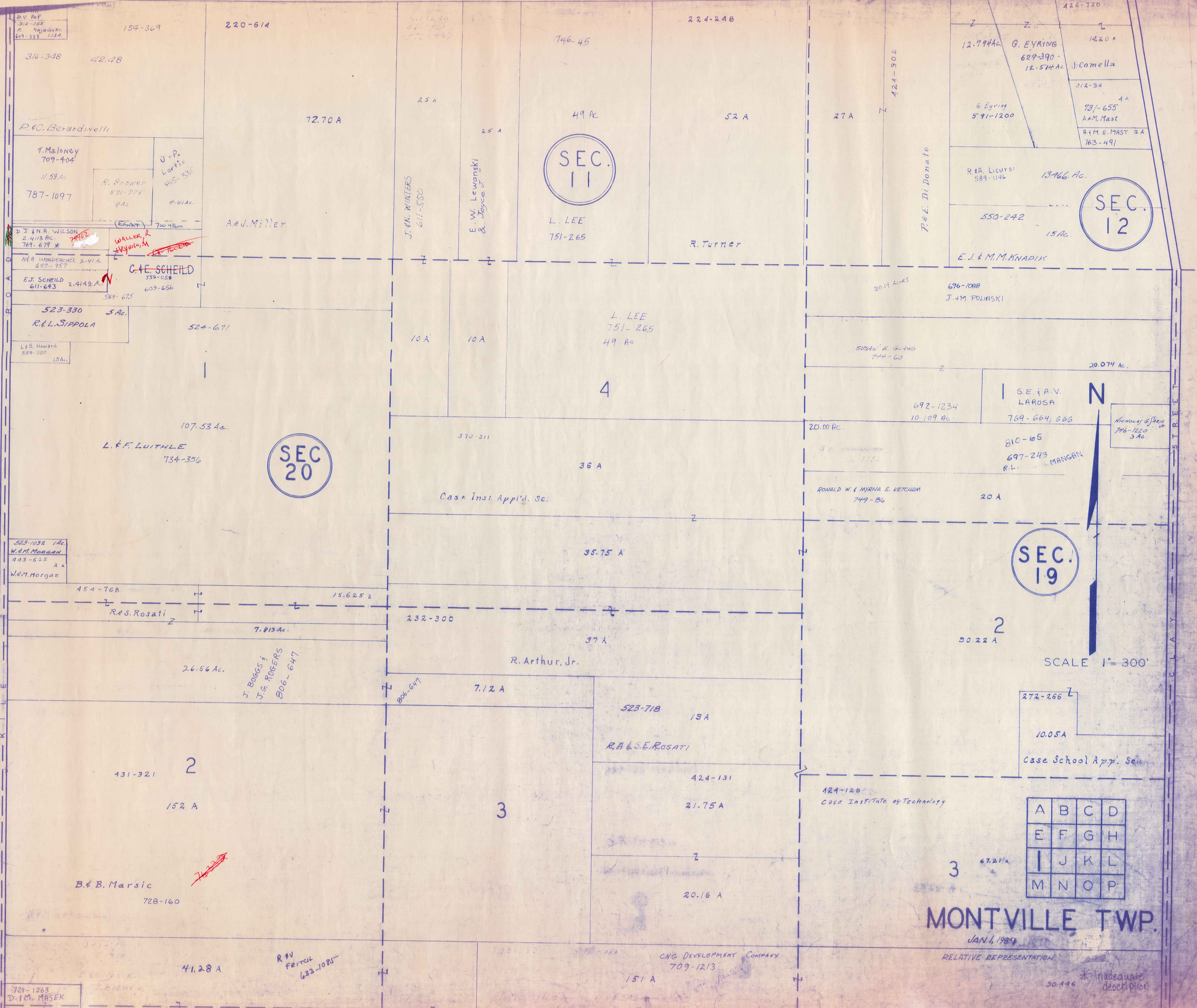
G. A. P. ROSS

M. O. R. C. A. N. ROAD

U S 6

H W Y.

H A M B D E N T O W N S H I P



SEC. 11

SEC. 12

SEC. 20

SEC. 19

A	B	C	D
E	F	G	H
I	J	K	L
M	N	O	P

MONTVILLE TWP.

JAN 6, 1989

RELATIVE REPRESENTATION

* Inadequate description

CNG DEVELOPMENT COMPANY
709-1213

721-1263
D. & M. MASEK

R. & V. Fritsch
633-1085

SEE
DETAIL SHEET
10 Q

SEC.
14

SEC.
15

SEC.
17

SEC.
16

R.L. WILSON
677-842
42.322 Ac.

50 A

70.57 A

70.44 Ac.

352-736

418-995

459-402,404

P.A. FISHER
A.J. BERTKE
766-806

J. & S. Dretzel
492-512

66.38 Ac.
454-307
F. & M. McKeon

E. F. & E. WEBER
524-266
67.358 Ac.

S. Ziegler
31.79 Ac.
459-402,404

S. Ziegler
26.24 Ac.
425-86

A. L. - H. K. Ohralik

A. Niksa

731-1191

E. S. Bystron
732-819

245-B
571-1368

6

10 A

5

110.50 A

6

50.23 A

37.914 A

523-725

37.19 Ac.

459-402,404

T. & E. Stone

EUCLID RIFLE
AND
HUNTING CLUB
647-403

295-397 Euclid Rifle & Hunting Club

10 A

2

4

2

30.50 A

964 A

55.50 A

260-433
S Yambor

46.50 A

52.69 A

R.M. GAREY
611-881
1.09 A.

R.M. GAREY
611-879

P.M. Guretzky

H. V. Bessner

J. BANLIKOWSKI 624-308

J. Yambor Jr.
501-34
8.00 Ac.
G. YAMBOR
611-498
3.000 A.
S. Yambor
548-657
3.00 Ac.
S. J. McDaniel III
408-571
2.603-34
3 Ac. 603-34

* Inadequate
description

W H I T N E Y R O A D

S U N R O A D

25 A

453-333

42.50 A

G. & C. Brown

F.R. Klous 245-591
17.7 A.
682-519 688-689 703

F.R. Klous
587-1205
13 A.

L.P. CLAYPOOL
785-367
20 Ac.

C. B. GYETKO
10.00 Ac.
777-210

M.A. GYETKO
777-212
13.36 Ac.

M.A. GYETKO
19.90 Ac.
672-1032

777-208
777-216

C. B. GYETKO, JR.
608-557
21.65 Ac.

T.A. KADAR
723-1368
657-370

P.M. STEPHEN SWELL
735-1008
9.952 Ac.

H. FALLON
Ameritrust Co.
808-311

M. WILEY
JACKSON
7.44 Ac.
609-283

226-89
245-69
558-1064

320-385

14.74 A

667-776, 797
684-439
L.W. & P.B. KOVRCH

A	B	C	D
E	F	G	H
I	J	K	L
M	N	O	P

MONTVILLE TWP

JAN. 1, 1989
RELATIVE REPRESENTATION

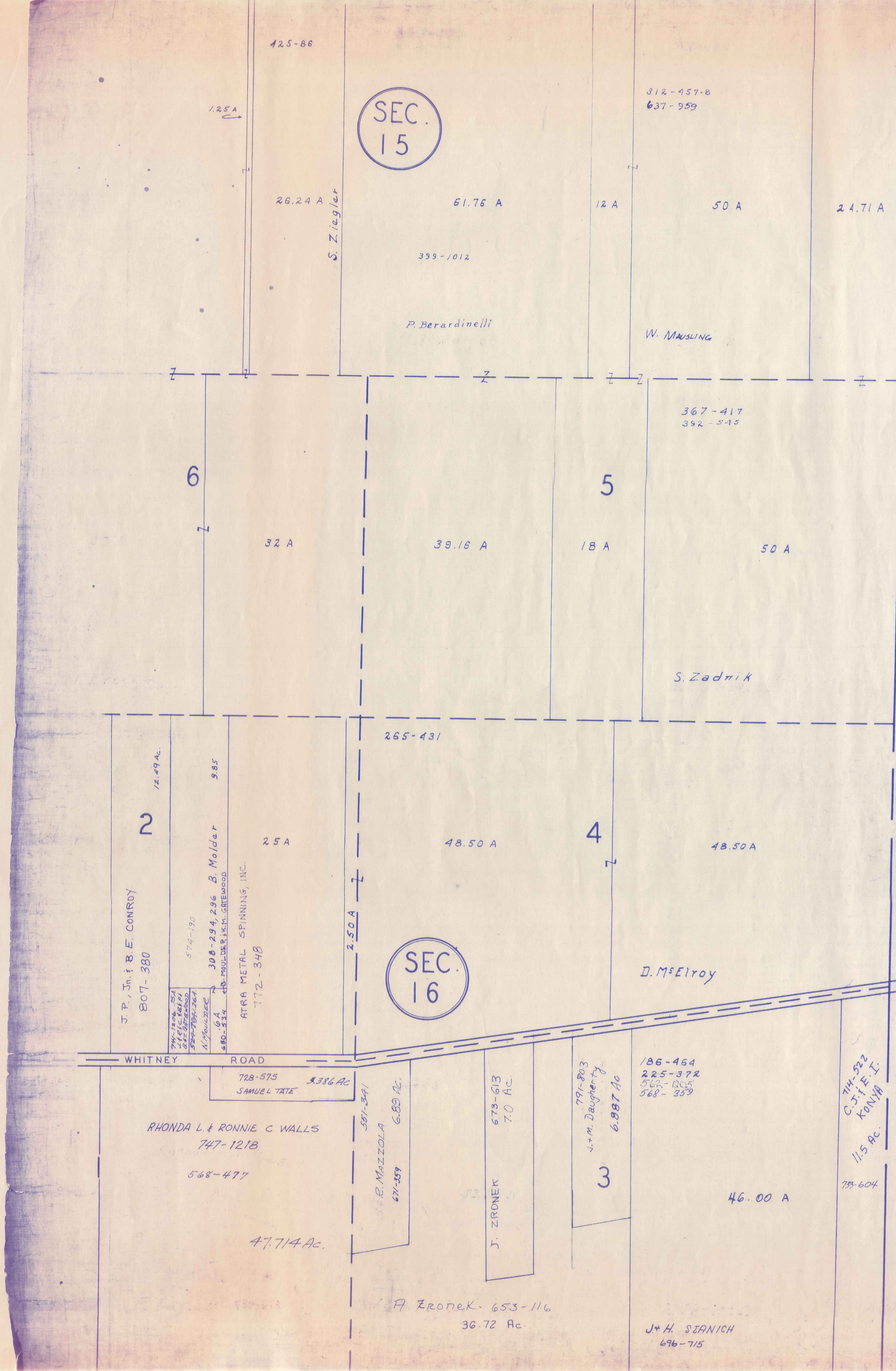
N

SCALE 1"=300'

SEC. 15

SEC. 16

C O U N T Y
A S H T A B U L A



* Inadequate description

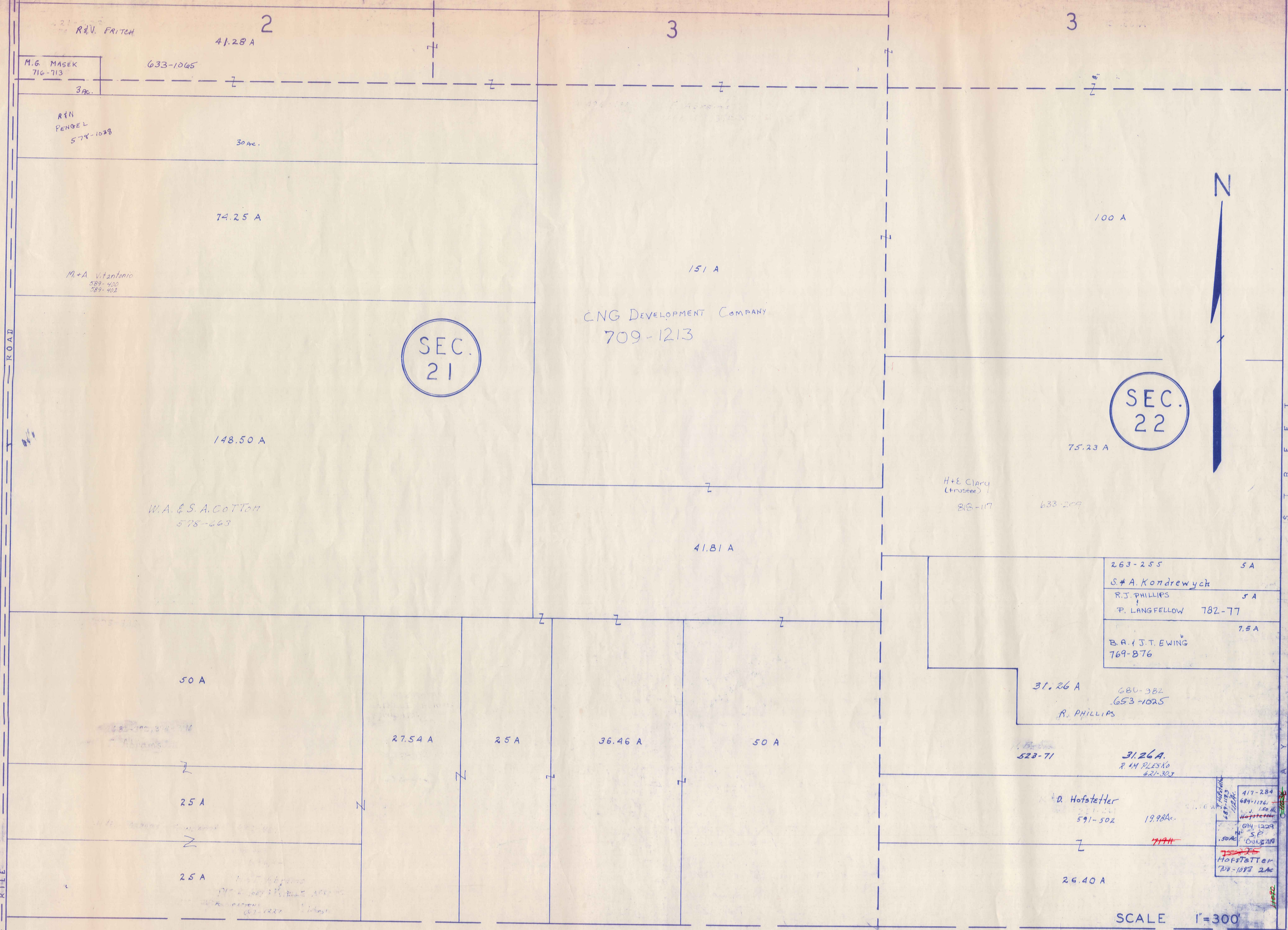
SCALE 1"=300'
JAN 1, 1988

A	B	C	D
E	F	G	H
I	J	K	L
M	N	O	P

RELATIVE REPRESENTATION

MONTVILLE TWP.

H A M B D E N T O W N S H I P



SEC. 21

SEC. 22

SCALE 1"=300'

H U N T S B U R G T O W N S H I P

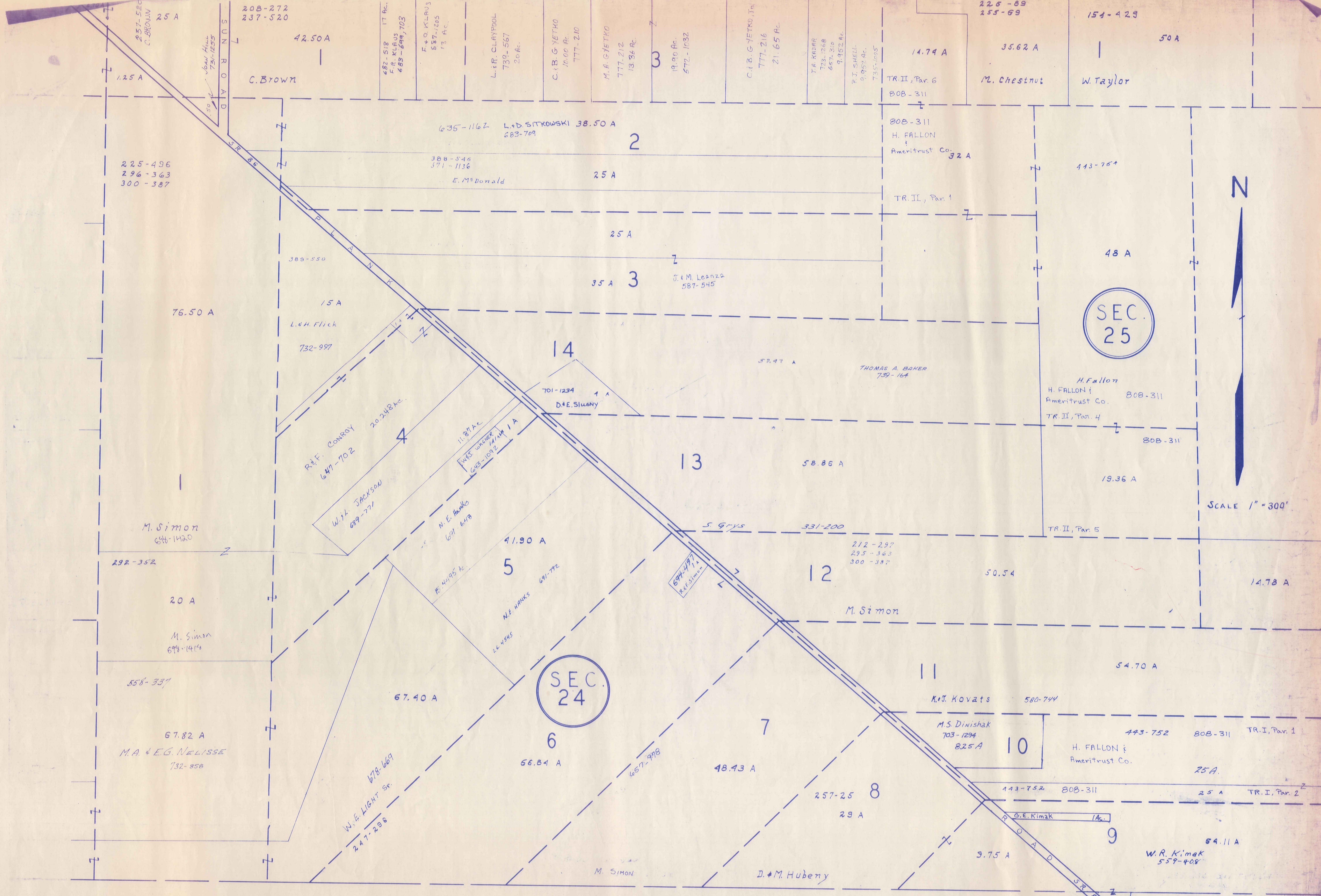
A	B	C	D
E	F	G	H
I	J	K	L
M	N	O	P

JAN. 1, 1989
RELATIVE REPRESENTATION

MONTVILLE TWP

R.W. Map
V.A. Wilson
874-1200

* Inadequate description



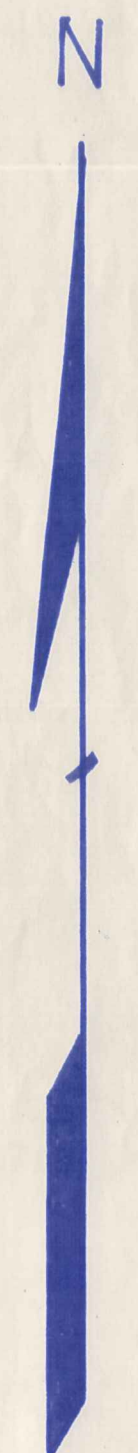
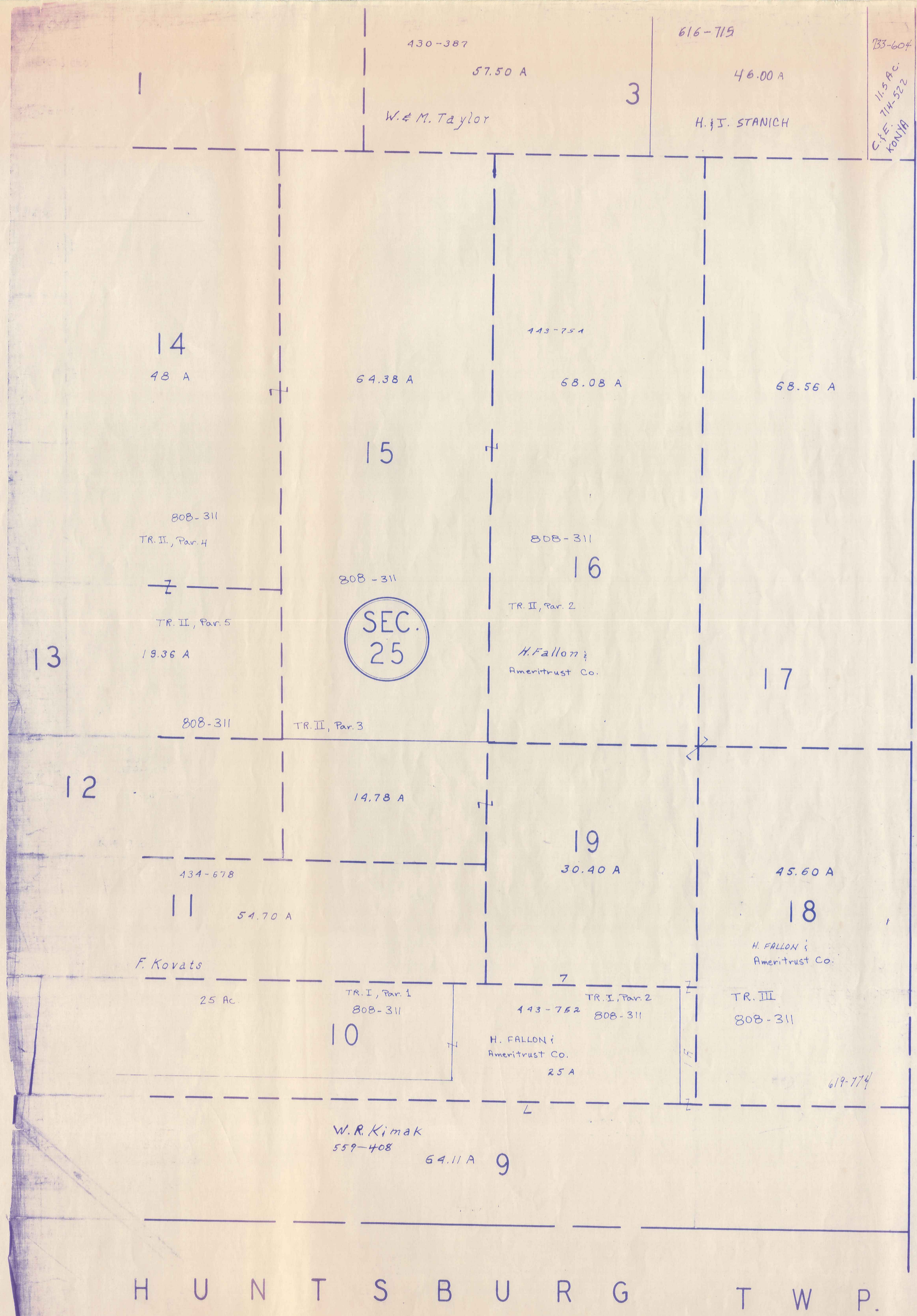
H U N T S B U R G T O W N S H I P

JAN 1, 1989
SCALE 1" = 300'

A	B	C	D
E	F	G	H
I	J	K	L
M	N	O	P

* Inadequate description

RELATIVE REPRESENTATION



SCALE 1" = 300'

JAN 1, 1900
 RELATIVE REPRESENTATION

* Inadequate description

A	B	C	D
E	F	G	H
I	J	K	L
M	N	O	P

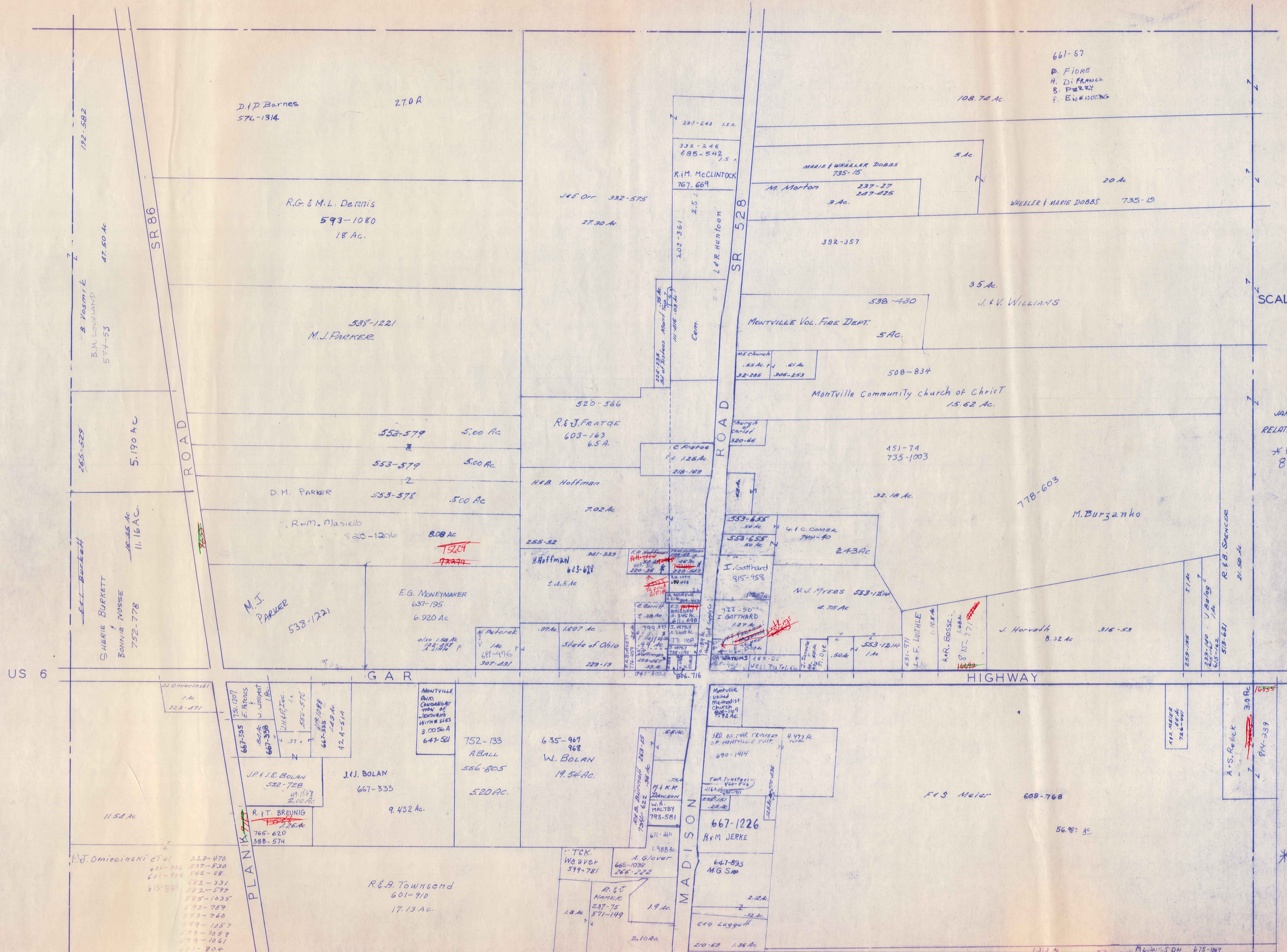
MONTVILLE TWP

MONTVILLE

TWP

SECTION

13



SCALE 1" = 200'

JANUARY 1, 1989
RELATIVE REPRESENTATION

* HOFFMAN ET AL
816-150
 .51 AC
 .40 AC
 .44 AC
 .39 AC

* Inadequate description